



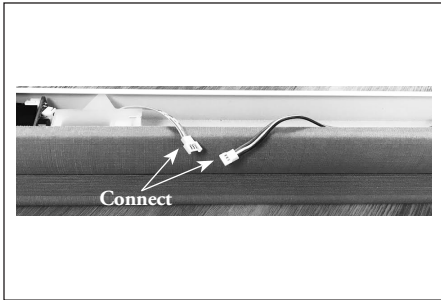
Simplicity

Rechargeable Motorization

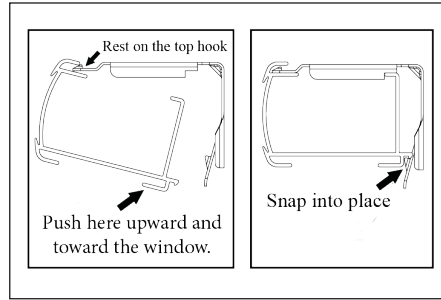
CELLULAR SHADES |

Quick Start Guide

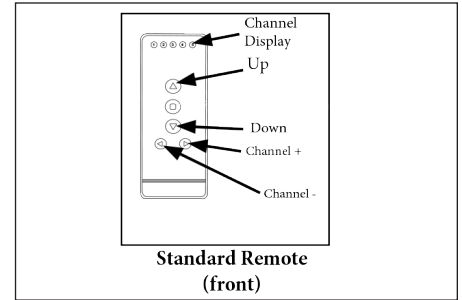
Your shade has come pre-programmed from the factory. Follow these easy steps to get started.



1. Connect the motor and battery in the headrail (as shown).



2. Mount the shade.

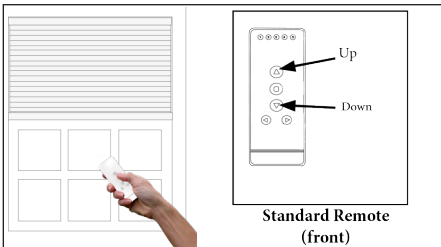


Standard Remote (front)

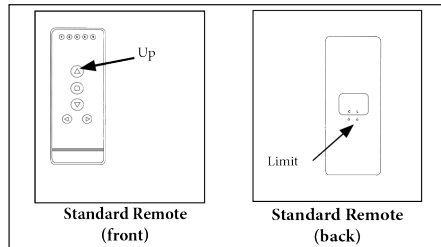
3. Your shade is now ready!
Select the programmed channel and use the UP and DOWN arrows to operate the shade.

Setting/Using a Favorite Position

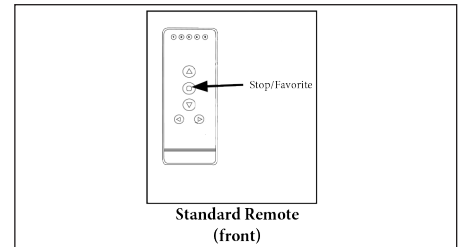
Make sure there is only one shade programmed to the channel when setting a Favorite position.
If more than one shade is set, please see UNLINK A SHADE in the Simplicity guide at vistaproducts.com/guides.



1. Using the UP and DOWN arrows, move the shade to the desired Favorite position.



2. To save the Favorite position, hold the LIMIT button and hold the UP button at the same time. Release after a series of short beeps.



3. Press the STOP/FAVORITE button to move the shade to the set Favorite position.
NOTE: Make sure shade is fully stopped before using the Favorite position.

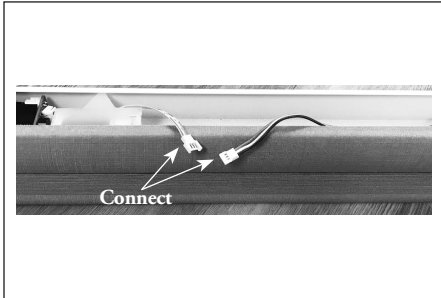


Simplicity

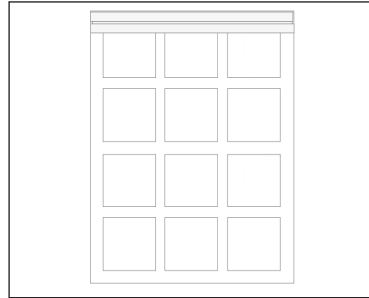
Rechargeable Motorization

6 CHANNEL TIMER REMOTE | Quick Start Guide

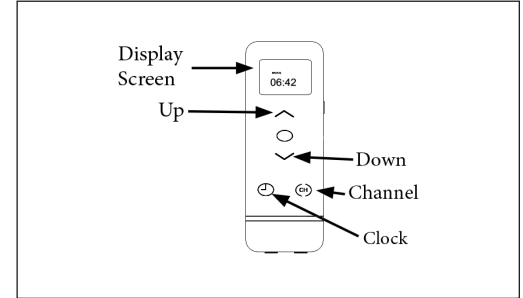
Your shade has come pre-programmed from the factory. Follow these easy steps to get started.



1. Connect the motor and battery in the headrail (as shown).



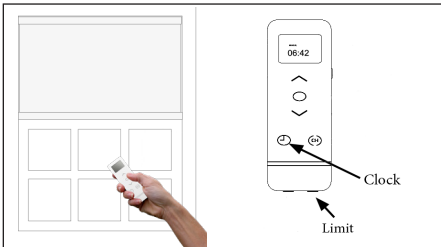
2. Mount the shade.



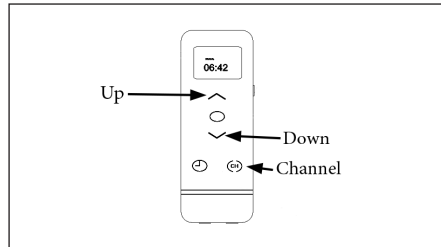
3. Your shade is now ready! Press the **CLOCK** button until the display shows 'Manual'. Select the programmed channel and use the **UP** and **DOWN** arrows to operate the shade.

Setting Time and Day

NOTE: To turn the remote on, press the **POWER** button on the right side of the remote. Make sure the remote is in 'Manual' mode. Press the **CLOCK** button until 'Manual' appears on the screen.

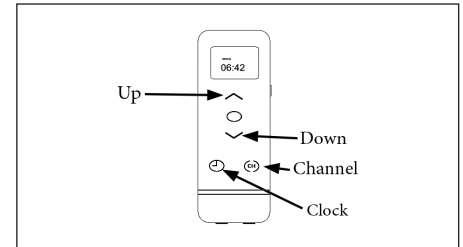


1. Push and hold the **LIMIT** button. While holding the limit button, push the **CLOCK** button for 3 seconds and release. The hour digits will flash.



2. Use the **UP** and **DOWN** buttons to set the current hour. Press the **CHANNEL** button to confirm hour and advance to minutes.

NOTE: Time is in 24 hour format.



3. Repeat step 2 for minutes and day. Once time and day are set, hold the **CLOCK** button for 3 seconds. Display will flash and then display current time and day.